

CL100 & CL101



CL100



CL101

Key Benefits

- Does not use water
- No foul odours entering the bathroom
- Easy to install and clean
- Made of vitreous china

Specifications

- Weight
 - CL100: 22 kg
 - CL101: 26 kg
- H x D x W: 69 cm x 40 cm x 43cm
- Drain pipe connection: 50 mm

CL141 Urinal Trap

(Available as spare part)

The trap creates an air seal so that foul odours from the pipe cannot enter the bathroom, while allowing the liquids to flow out.

Depending on the amount of traffic it can last up to 5 years.



Maintenance

The urinal can be cleaned as any other toilet/urinal. Do not use hot water as this will damage the trap seal.

If used in combination with a composting tank, only use biological detergent. Never use bleach or detergents containing bleach as this would instantly stop the composting process.

Replacing the trap:

1. Lift the urinal from the wall
2. Loosen the metal band
3. Untighten the trap, and take it out.

Installation

The urinals come with an installation kit.



1. Mark and drill four 8mm holes at desired height (see figure 1)
2. Fit the plastic expansion plugs
3. Install the metal mounting brackets using the tapping screws.



4. Ensure that the CL141 trap is fitted onto the urinal, and tight.
5. Fit the PVC pipe piece to the bottom of the CL141 trap by tightening the metal band.



6. Fit the rubber mouth piece on the drain pipe coming out of the wall.
7. Hang urinal body onto mounting bracket.
8. Pour water into urinal to check for any leakage

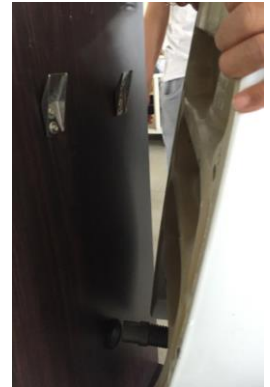
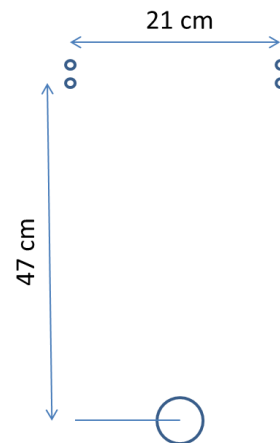


Figure 1



Note:

The usual height of the urinal rim is 60-65 cm. This may be changed depending on preference.